



# **Business Applications Solution (BAS) Program Common Solution Kick Off**

---

**UNITED STATES DEPARTMENT OF COMMERCE  
OFFICE OF FINANCIAL MANAGEMENT**

OCTOBER 1, 2020



**THE PURPOSE OF THE  
COMMON SOLUTION KICKOFF  
IS TO PROVIDE THE  
DEPARTMENT OF COMMERCE  
BAS PARTICIPANTS WITH THE  
PROJECT OBJECTIVES,  
TIMELINE, ROLES AND  
RESPONSIBILITIES OF THE  
UPCOMING SPRINT SESSIONS  
AS WE PREPARE FOR THE BAS  
DEPLOYMENT.**

Expected  
**Structure.**  
Unexpected  
***Flexibility.***



# GLOBAL DESIGN TAKEAWAYS

## GD ARTIFACTS TO SERVE AS THE BASELINE FOR CS



**The Global Design Workshops supported the following key takeaways to prepare for Common Solution Sprints**

### KEY DESIGN DECISIONS

- Confirmed KDDs by workstream
- Identified differences among bureaus as part of workshops
- KDDs will drive CS business process recommendations

### REQUIREMENTS

- Used as baseline for Workshops
- Reviewed post-workshop to prepare for Common Solution
- Small subset identified as requiring additional confirmation as part of CS

### BACKLOG

- From workshops, list of items to review during Common Solution
- Tracked non-functional requirements (technical, reporting)

### EXIT CRITERIA

- Review of workshop exit criteria by bureau stakeholders
- Identified additional CS topics
- Initial list of data calls to support demos



# GD IS GONE – CS IS HERE!

## WHAT IS COMMON SOLUTION AND WHAT DOES THAT MEAN?

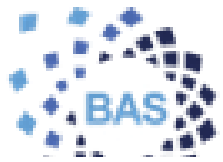


### What's coming?

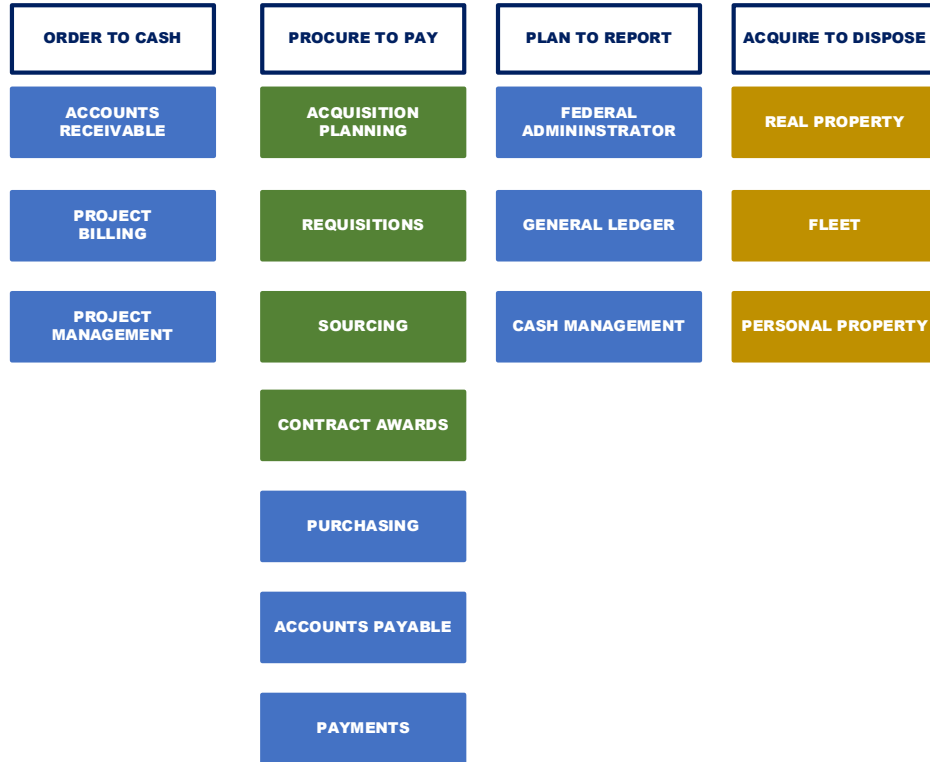
- Deep Dive Sessions
  - CS will review the BAS requirements, configurations, and future capabilities in iterative sprints
  - Three CS sprints will build upon each other with functionality reviewed each quarter throughout the year
- Attend CS sessions – invites will be sent shortly
  - CS activities will take place from October 2020 to the end of FY2021
- Data Calls – enhance the Sprints
  - Respond to data calls to provide DOC-specific data for our demonstrations



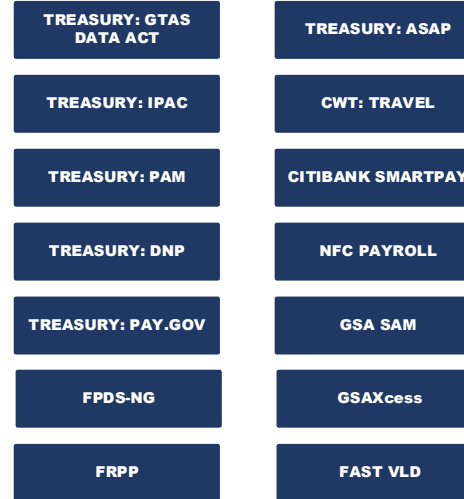
# BAS SOLUTION OVERVIEW



## CORE APPLICATION: FINANCE, ACQUISITION, ASSET MANAGEMENT



## EXTERNAL INTEGRATION\*



## INTERNAL INTEGRATION\*



## REPORTING ENVIRONMENT



**At a high level, the BAS Solution is comprised of the following:**

- Core Applications
- Reporting Environment
- External and Internal Interfaces

CGI Sunflower

Unison PRISM

Oracle EBS



**BUSINESS APPLICATIONS SOLUTION**  
*One Commerce*

EXPECTED STRUCTURE. UNEXPECTED FLEXIBILITY.



# THINGS TO KEEP IN MIND

## TRANSITIONING FROM GD TO CS



### A FEW REMINDERS AS WE PIVOT TO THE CS FRAMEWORK

1

Be open and accepting of standardization

2

Opportunity to make financial, acquisition, and asset management operations and processes very robust

3

Please keep an open mind and forward-thinking perspective throughout Common Solution and during the future Sprint Sessions

4

Think about the future – our discussions and decisions during CS will shape the to-be BAS experience

5

Before we begin rolling out the system in fall 2022 (and beyond), we will provide training and communications to help your staff understand BAS and become comfortable with the system



# DRIVING TOWARDS BAS BENEFITS

**BAS WILL IMPROVE DEPARTMENT OF COMMERCE'S FINANCIAL, ACQUISITION, AND ASSET MANAGEMENT, OPERATIONS, AND COMPLIANCE**



<b>MANAGEMENT INSIGHT</b>	<b>OPERATIONAL EXCELLENCE</b>	<b>CONTROL &amp; COMPLIANCE</b>
<ul style="list-style-type: none"><li>• Enhances financial management reporting</li><li>• Improves access to and availability of more detailed financial, acquisition, and asset information</li><li>• Improves the quality of Program related financial data</li></ul>	<ul style="list-style-type: none"><li>• Simplifies and standardizes business processes</li><li>• Increases automation of business processes</li><li>• Integrates data and processes</li><li>• Enterprise-wide reporting</li></ul>	<ul style="list-style-type: none"><li>• Enables greater transparency</li><li>• Enhances ability to comply with reporting regulations</li><li>• Automates internal controls</li></ul>



# BAS PROJECT TEAM

A TEAM EFFORT INVOLVING BROAD PARTICIPATION



## GOVERNANCE

- Senior Executive Committee
- Co-Executive Leads
- Change Control Board
- Executive Council

## DOC BAS PMO

- DOC BAS Team
- System Implementation Team (contractors)

## CS PARTICIPANTS

- Review configurations and requirements via Configuration Demonstration Sessions
- Review business process flows

## DECISION MAKING FORUM

- Nominated by Leadership
- SMEs in financial, procurement, and acquisition processes and systems
- Change Champions from across DOC to foster communications with staff





# ROLES AND RESPONSIBILITIES

## COMMON SOLUTION EXPECTATIONS



ROLE	RESPONSIBILITY	DEEP DIVE	DATA CALL	CONFIG DEMO SESSIONS	CS DECISIONS
<b>DECISION MAKING FORUM</b>	<ul style="list-style-type: none"> <li>Represent the requirements of the User Community</li> <li>Identify changes to policy and procedures</li> <li>Participate in the <b>deep dive</b> discussions to align configurations and business process to DOC policy requirements</li> <li>Coordinate <b>data calls</b> for Configuration Demonstration Sessions</li> <li>Identify potential issues/gaps vs. the current process</li> <li>Identify process improvements and potential workarounds</li> <li>Work with business community members to resolve Sprint Sessions parking lot items</li> <li>Review recommended business processes during <b>Configuration Demonstration Sessions</b></li> </ul>	X	X	X	X
<b>CS PARTICIPANTS</b>	<ul style="list-style-type: none"> <li>Review existing business processes within respective organization and understand similarities and differences between other functional areas</li> <li>Review recommended business processes during <b>Configuration Demonstration Sessions</b></li> </ul>			X	
<b>DOC BAS PMO</b>	<ul style="list-style-type: none"> <li>Introduces the day's agenda, ground rules, and attendees in the CS sessions</li> <li>Serve as DOC BAS functional POC</li> <li>Coordinate issue tracking and management as well as backlog closeout</li> </ul>	X		X	X
<b>BAS CORE APPS TEAM</b>	<ul style="list-style-type: none"> <li>Lead <b>Deep Dive</b> process discussions</li> <li>Lead the execution of the <b>Configuration Demonstration Sessions</b></li> <li>Respond and/or follow-up on Sprint Sessions questions</li> <li>Captures the requirement changes, issues, parking lot items and gaps</li> </ul>	X	X	X	



# BAS DEPLOYMENT TIMELINE

## BY PHASE



### OUTCOMES

FY20 Q3 – Q4

**Global Design**

- ✓ Key Design Decisions, System Configuration Catalog Matrix Recommendation

FY21 Q1 – Q4

**Common Solution**

- ✓ Baseline Configurations
- ✓ System Demonstration to validate business process and configurations
- ✓ Reports – Interface – Conversion – Extension – Workflow (RICEW) Development of Common Solution
- ✓ Identify above & beyond requirements

**Sunflower | RP, Fleet, PP**

- ✓ FY21Q1 – Q3 Real Property Sprint
- ✓ FY21Q2– Q3 Fleet Sprint

FY22 Q1 – Q4

**NOAA**

- ✓ NOAA Conversion
- ✓ NOAA User Acceptance Test
- ✓ Personal Property Standardization Sprint
- ✓ NOAA Training
- ✓ FY22Q4 NOAA Deployment

FY23 Q1 – Q4

**NIST**

- ✓ NIST Conversion
- ✓ NIST User Acceptance Test
- ✓ NIST Training
- ✓ FY23 Q4 NIST Deployment

FY24 Q1 – Q4

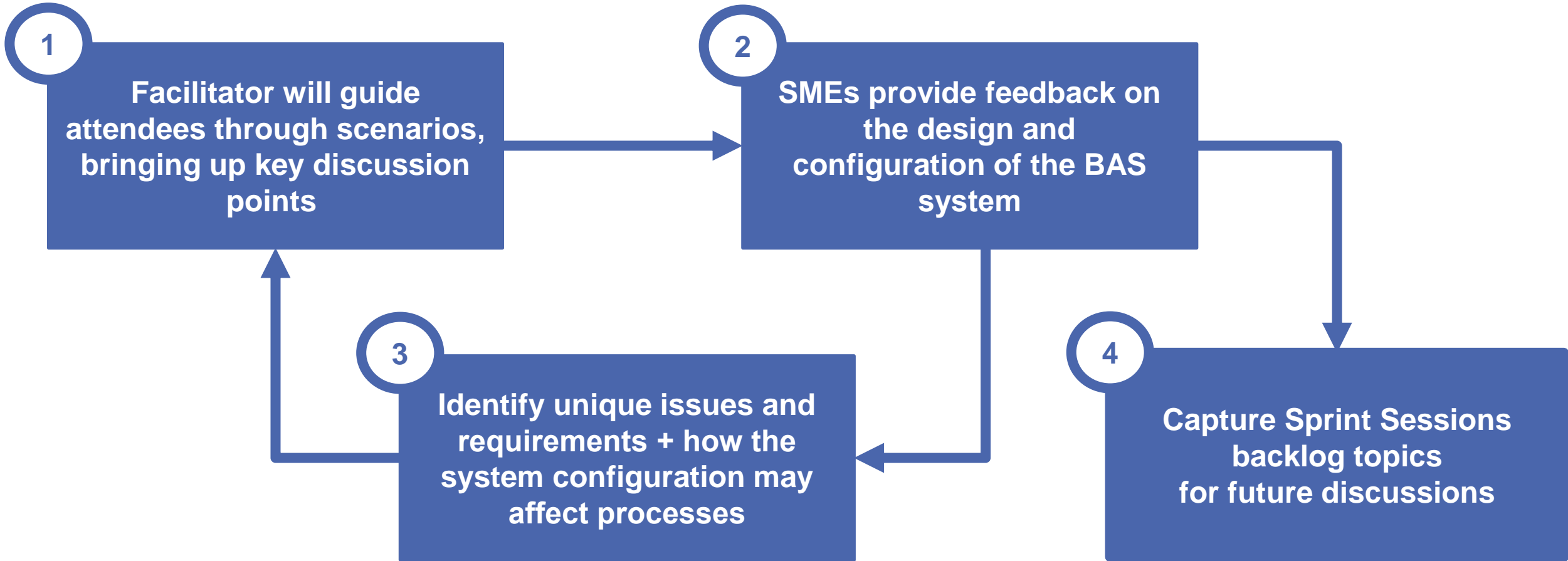
**CENSUS**

- ✓ Census Conversion
- ✓ Census User Acceptance Test
- ✓ Census Training
- ✓ FY24 Q4 Census Deployment



# SPRINT SESSIONS

## HOW WILL THE SPRINT SESSIONS SESSION WORK?



**SME FEEDBACK WILL HELP FURTHER VALIDATE THE DOC BUSINESS REQUIREMENT BASELINES AND WILL SERVE AS WILL SERVE AS INPUT FOR REMAINING DESIGN PHASE ACTIVITIES**



# CS SPRINT CADENCE

## BREAKDOWN BY SPRINT



Each Sprint aligns to a 3-month duration which repeats throughout the Common Solution phase

COMMON SOLUTION SPRINTS

### MONTH 1 | DEEP DIVE SESSIONS

Based on GD KDDs and exit criteria, dedicated workshops will review policy and DOC requirements to confirm CS configurations before Sprint Sessions / demos (1 – 2 hours; sessions scheduled for Month 1).

### MONTH 2 | DATA CALL

Specific data asks to prepare business process scenarios for demonstration purposes to mimic real business cases (Request via email; no meeting required). During Month 2, the Core App Team will digest the details to prepare for Sprint Sessions.

### MONTH 3 | CONFIGURATION DEMONSTRATION SESSIONS

Functional application demonstrations based on CS configurations and confirmed business process flows as reviewed in GD and CS Deep Dive sessions (2 – 4 hours; sessions scheduled for Month 3 per topic).

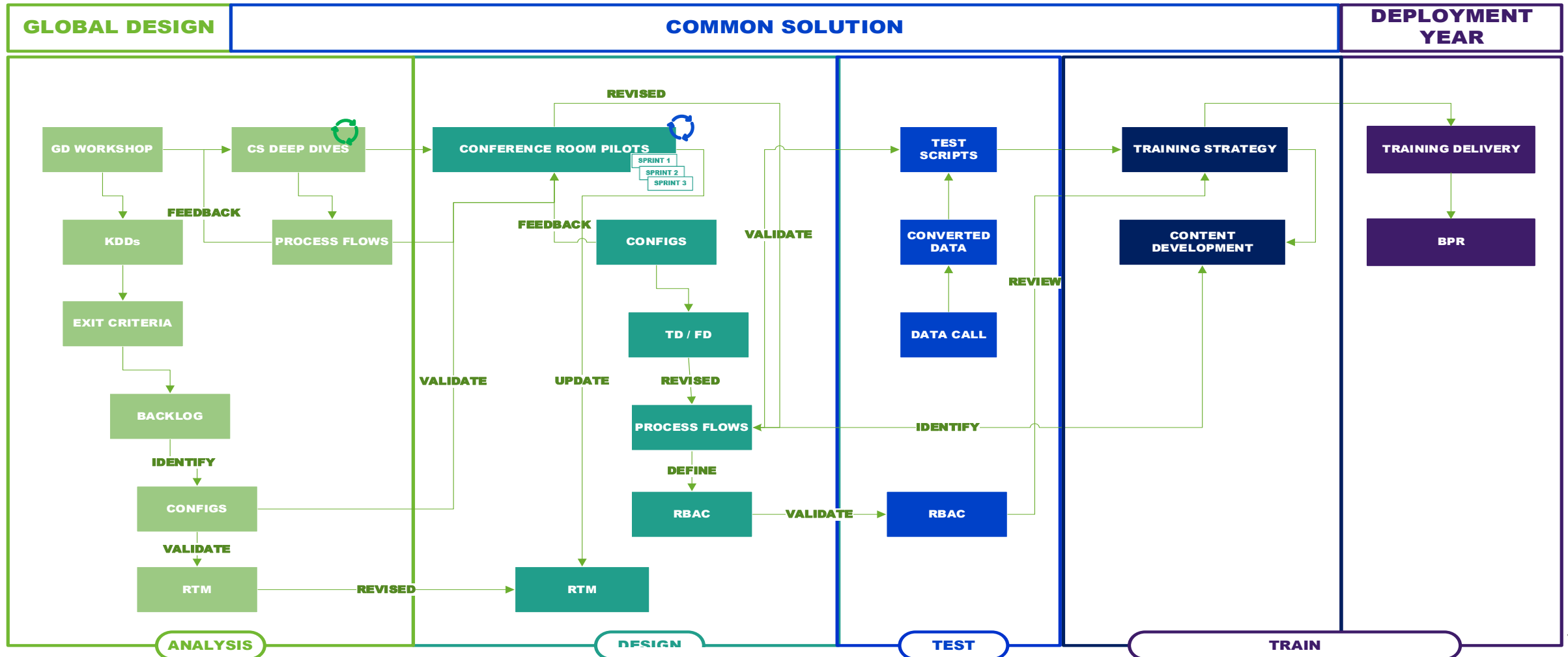


# CS APPROACH

## GLOBAL DESIGN ARTIFACTS TO DRIVE CS KEY ACTIVITIES



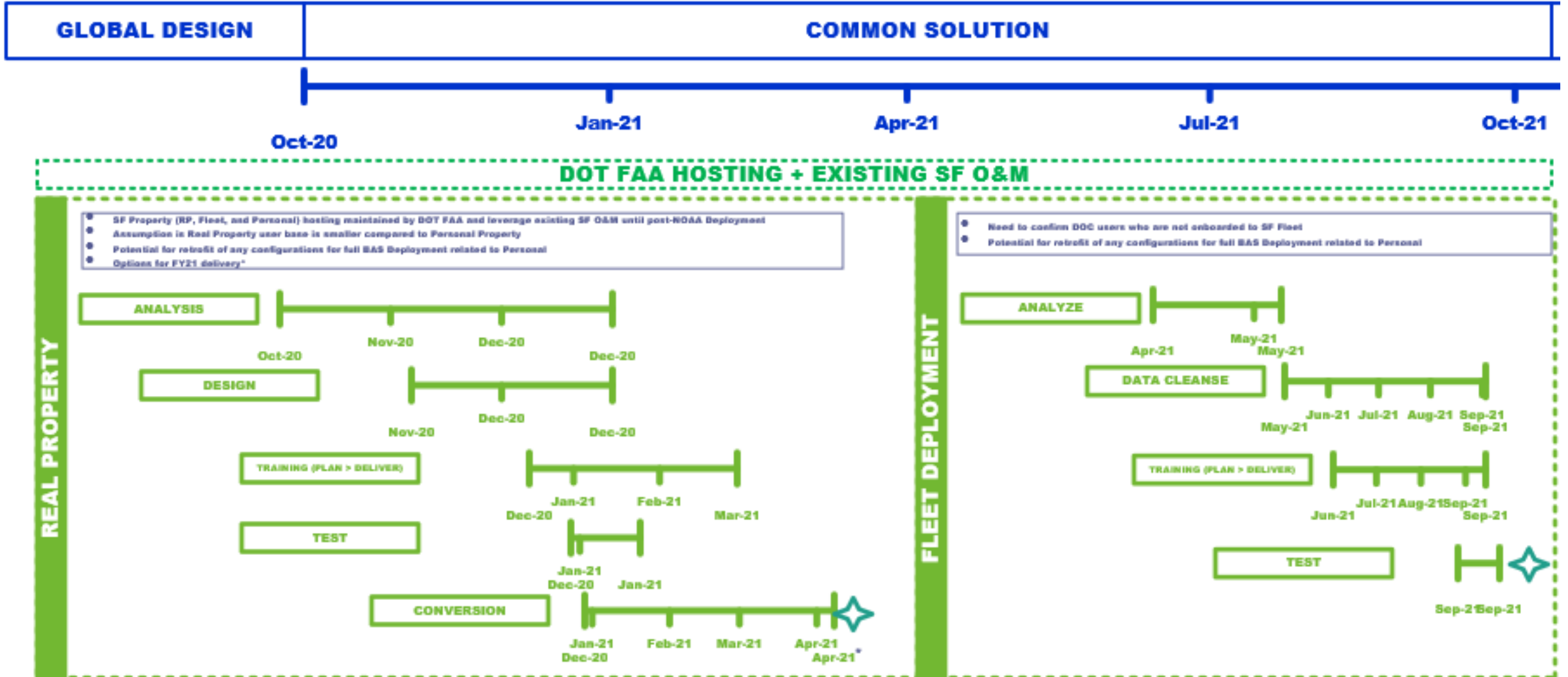
**GD artifacts serve as the CS baseline upon which we will review and build the Common Solution baseline in an iterative fashion via Sprints Sessions**





# SUNFLOWER KEY ACTIVITIES

## HIGHLIGHTED PHASES FOR SF DEPLOYMENT FOR CS



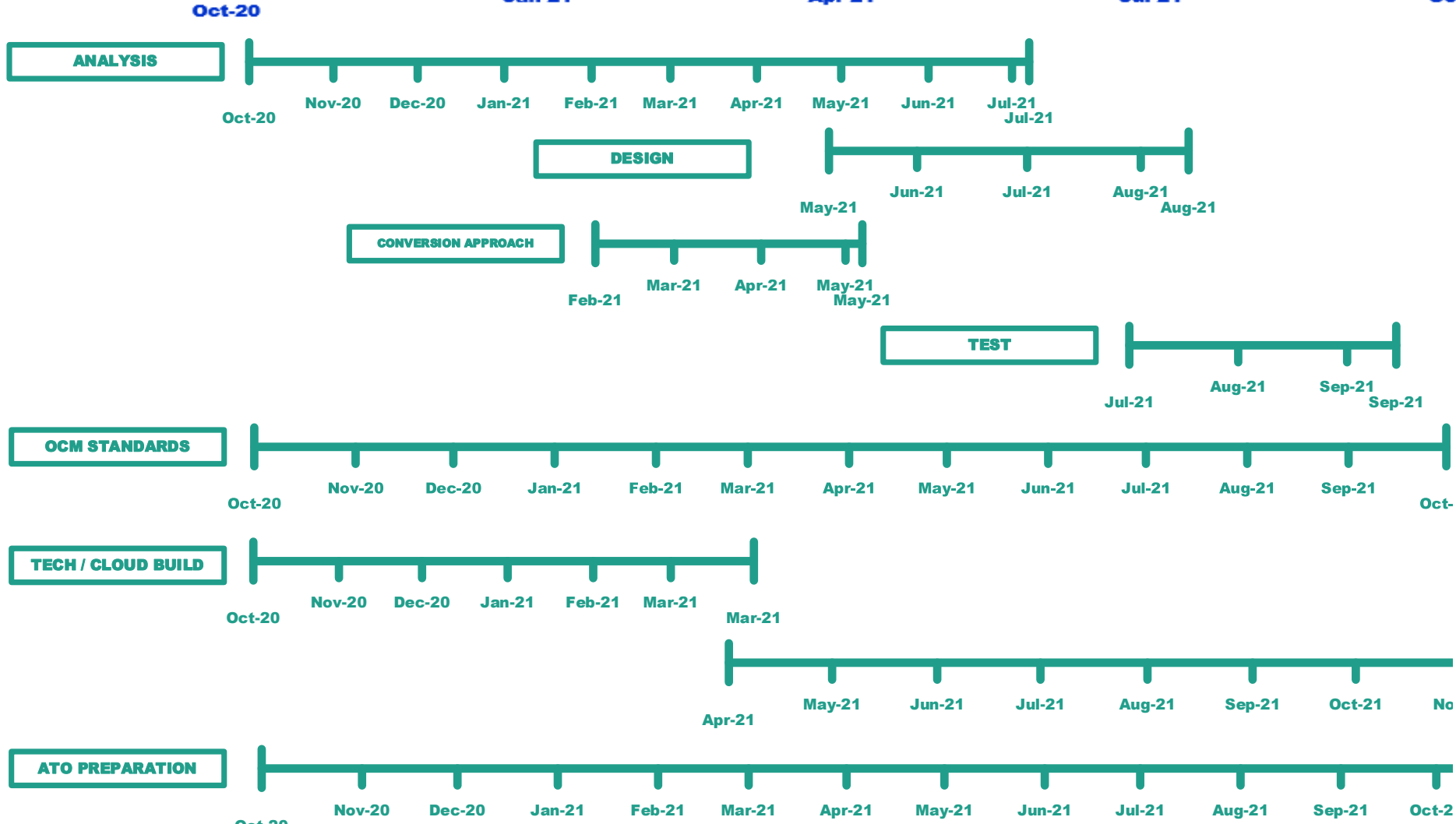


# CS APPROACH



**AFTER 10/2021, DEPLOYMENT YEAR 1 FOLLOWS FOR THE 10/2022 RELEASE**

**COMMON SOLUTION**





# CS SPRINTS PER APPLICATION



## FEATURED TOPICS

### SPRINT 1 FY2021 Q1

### SPRINT 2 FY2021 Q2

### SPRINT 3 FY2021 Q3

#### PRISM

- Advanced Acquisition, Requisitions

- Pre-Solicitation/Solicitation
- Award Management

- Award Management
- Post Award Management
- Closeout
- Security Group
- G-Invoicing

#### EBS

- AP: Invoices, Approval Hierarchies,
- AR: Reimbursables, Billing
- GL: Ledger Overview, ACS, CVR
- PA: Cost Allocation, BAS Data Standardization, Object Classes, Labor Costs

- AP: Payments, PAM, CTA
- AR: Receipts, Collections, Adjustments, Reporting
- GL: Journal Approval, Budget, SoF
- PA: IAA, Billing / Revenue

- AP: Vendor E-Portal, P-Card, Payroll, G-Invoicing
- AR: G-Invoicing, Consolidated Billing
- GL: DATA Act, Month-End Close, Year-End Close
- PA: Advances, Expenditures, Reporting

#### SF

- Real Property: Acquisition, Utilization, Finance Treatment, Disposals, Reporting / Interfaces

- Fleet: Acquisition, Utilization, Finance Treatment, Disposals, Reporting / Interfaces

- Personal Property: Acquisition, Utilization, Finance Treatment, Disposals, Reporting / Interfaces

#### INT

- SAM
- PRISM – EBS
- Sunflower – EBS

- Grants (GOL, GMIS, ASAP)
- Travel
- PCards
- PAM/DoNotPay

- NFC Labor/Employee
- Treasury Pay.gov
- mLINQ relocation manager
- IPAC (G-Invoicing)





# KEY DELIVERABLES BY PHASE

## COMMON SOLUTION DELIVERABLE EXPECTATIONS



### GLOBAL DESIGN

#### FY2020 Q3 – Q4

- Design Workshops
- Default Configuration
- Confirm Requirements
- Identify Common Solution vs. Bureau-Specific Discussions
- Requirements Traceability Matrix
- System Configuration Catalog Matrix
- Implementation Plan

### COMMON SOLUTION

#### FY2021 Q1 – Q4

- Validate Common Solution
- Identify above and beyond requirements
- Targeted demonstrations
- Updated Implementation Plan
- Updated RTM
- Fit / Gap Analysis
- Solution Design
- Conversion Strategy
- Deployment Plan (Conversion, Interface)
- Interface Strategy (Design, Requirements)
- Test Strategy (Test Scripts, Test Plan)
- Decommission Approach
- BAS SOPs, Functional CONOPS
- Training Plan

### DEPLOYMENT YEARS

#### FY2022 – FY2024

- Review Additional Efforts Needs (INT, CNV)
- Training Needs
- Updated RTM (Application Requirements, Configurations)
- Fit / Gap Analysis
- Solution Design
- Conversion Strategy (Design, Code, Mock Test Results)
- Deployment Plan (Conversion, Interface)
- Interface Strategy (Design, Requirements, Test Results)
- Test Strategy (Test Scripts, Test Plan, Test Results, Test Analysis Report)
- Decommission Approach
- BAS SOPs, Functional CONOPS, Interface SOPs
- Training Plan
- Financial Audit Strategy
- Go Live Plan

**THE COMMON SOLUTION PURPOSE IS TO VALIDATE THE CONFIGURATIONS AND REQUIREMENTS FOR THE DEPARTMENT-WIDE SOLUTION.**



# BAS 101

## FUNCTIONAL COMPONENTS OF BAS



**The BAS implementation will provide the following capabilities from the applications identified here:**

- Oracle E-Business Suite: Financials
- Unison PRISM: Acquisition
- Sunflower Systems: Asset Management

**BAS Financial**  


Acquire to Dispose	Order to Cash
Procure to Pay	
Plan to Report	

**BAS Acquisition**  


Pre-Award
Award
Post-Award

**BAS Property**  


Personal Property
Real Property
Fleet Management



# WHAT ARE SPRINT SESSIONS?

WORKING TOGETHER TO DETERMINE THE BAS CS



## WHAT SPRINT SESSIONS ARE FOR PARTICIPANTS

- An opportunity for key SMEs and business owners to review an initial configuration of the BAS software to identify gaps to be addressed
- A chance for key SMEs and business owners to provide input into the future development of product test scripts, To-Be processes, user training, etc.

## WHAT SPRINT SESSIONS ARE FOR DOC BAS:

- Series of design sessions that allow the team to view an initial configuration of the software package and validate those configurations
- An approach for assessing the standard business processes of the software functionality
- Opportunity to review field-by-field of the recommended business processes via guided scenarios and scripts using DOC data

## WHAT SPRINT SESSIONS ARE NOT:

- A training class
- A hands-on interactive session
- A one-sided presentation of software functionality
- A demonstration of the final software solution
- A system configured for external interfaces
- A system with customizations or extensions
- A system integrated with third party applications
- A “sandbox” in which to play



# SPRINT SESSIONS DEMOS

## WHAT WILL WE BE SEEING?



- **Initial configuration of the BAS software**
  - Based on validated requirements and key design decisions from Global Design
  - Using standard out-of-the-box system functionality from Oracle E-Business Suite, Unison PRISM and Sunflower Assets and Sunflower Real Property
- **Numerous scenarios for each business process area**
  - Scenarios provide a sense of how the system works
  - Scenarios are designed to review the configuration of the solution and assess how it meets requirements
- **Real time views of the system screens**
  - Actual working software
  - Ability to enter data and navigate in real time



# **SPRINT SESSIONS GROUND RULES**

## **RULES OF THE GAME**



- **User participation**
  - The session should be a dialogue between the BAS Core Apps Team and the participants
  - Avoid side conversations: the conversation you might be having with the person offline about potential impacts is exactly the type of dialogue that makes the Sprint Sessions a success
- **Open Communication**
  - Questions are encouraged and discussions are integral components of the Sprint Sessions
- **Met, Mod, or Move On**
  - Avoid getting mired down in discussion, limit lengthy discussions.
  - Those items that cannot be resolved within a reasonable timeframe will be placed on the parking lot for further review and follow-up to be addressed in a later session or follow-up discussion.



# SPRINT SESSIONS: A DAY IN THE LIFE



## CORE APPS TEAM

## DOC BAS PMO

## RESULTS

1

- Perform and review initial configuration

- Discuss, review, and validate initial configuration settings and values

- Updated Requirements Traceability Matrix
- Fit Gap Analysis

2

- Perform walkthrough of system transaction flow

- Discuss, review and validate transaction flow with SMEs
- Discuss and provide direction for configuration options
- Assess system roles and responsibilities and access

- To-Be Business Process
- Solution Design
- Test Strategy
- Training Plan

3

- Identify RICEW and system configuration integration points

- Discuss and confirm RICEW design approach
- Validate RICEW integration points into the overall BAS solution

- RICEW Functional / Technical Designs
- Potential RICEW Scope Changes
- Final RICEW Inventory
- Solution Design

4

- Provide configuration options and alternatives to meet requirements

- Discuss and agree on configuration options

- Updated Requirements Traceability Matrix



# CS NEXT STEPS



ROLE	NEXT STEPS
DOC BAS PMO	<ul style="list-style-type: none"><li>• Confirm CS Calendar &gt; Distribute Meeting Invites</li><li>• Materials for any deep dive will be provided at least 3 business days ahead of scheduled meeting</li><li>• Publish list of to-be terminologies cross walk and acronyms for BAS</li><li>• Department-wide progress updates throughout Common Solution to track the Sprint progress and successes</li></ul>
DECISION MAKING FORUM	<ul style="list-style-type: none"><li>• Review the documentation before the deep dive session to provide use case and business scenarios during the deep dives</li><li>• Respond to data calls to support the Configuration Demonstration Sessions</li><li>• Validate configurations aligned to BAS business process recommendations</li></ul>
CS PARTICIPANT	<ul style="list-style-type: none"><li>• Respond to future meeting invites for Configuration Demonstration Sessions</li></ul>

**FOR ANY QUESTIONS OR ADDITIONAL FEEDBACK IN THE INTERIM,  
PLEASE CONTACT: [BASPROJECT@DOC.GOV](mailto:BASPROJECT@DOC.GOV)**

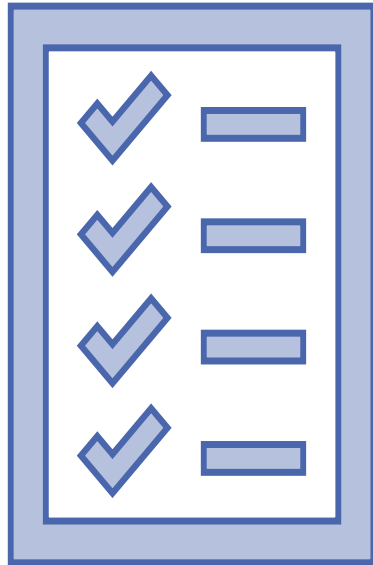






# CS SUPPLEMENTAL INFORMATION

ADDITIONAL INFORMATION FOR YOU TO REVIEW AHEAD OF CS MEETINGS



Sunflower Fleet + Personal Property

Unison PRISM

Oracle E-Business Suite

BAS Acronyms



# INTRO TO SUNFLOWER – FLEET + PP

## COMMON TERMS



Key Terms and Concepts	Definition
Catalogs	Combination of Manufacturer, Model Number, Official Name other details assigned to each asset. Catalogs can be one to many assets.
Complex Fields	Fields indicated with an asterisk (*).
Configuration	A set of rules and parameters within an application that provide pre-defined decision points or values that determine key functions such as security and administration.
Customization	Changes made to the base code of the system affecting standard screens, workflows, or functionality. In a COTS environment, customization is undesirable since it makes system upgrades more complex and time consuming.
Final Event	Used to specify the final disposition of an assets.
Initial Event	Used to identify how new assets were acquired.
Menu Bar	Main navigation method in Sunflower forms. Each main menu item has an expandable list of functions.
Ongoing Event	Used to specify and record changes on assets.
Organization	Organization in Sunflower. Can be assigned to one or more organizational purposes within Sunflower. In example: Dell = Manufacturer
Organization - Manager	Managing organization; ultimately responsible for managing the assets.
Organization - Owner	Financially responsible organization, typically the highest level organization.
Organization - Steward	Physically responsible for assets; can capture organizational hierarchy in a series of parent-child relationships among steward organizations.
Registered User	This is a profile in Sunflower that is assigned to a person record which will allow for roles to be assigned.
Registered User Roles	Roles that provide a user (person) with specific rights within the Sunflower application.
Site	Top level of the location hierarchy.
Status Bar	Provides a status of transactions, or helpful hints.
Structural Level 1	Second level of the location hierarchy. Comprised of a type and value. Ex. Type = Building, Value = HCHB
Structural Level 2	Third level of the location hierarchy. Comprised of a type and value. Ex. Type = Room, Value = C300
Sunflower Forms	Web enabled form where transactions are executed. Requires Java in order to open.
Sunflower Welcome Page	Main landing page after logging into Sunflower where forms and reports can be accessed.
Term Layer	Layer of customer specific nomenclature for fields that is applied on top of Sunflower core field names. Example: Manager = Bureau or Region
Toolbar	Each icon on the toolbar performs a specific action when you select them. Each toolbar button replicates menu bar action. You can place your mouse over each button, and they will provide you with a tool tip.
UDFs (User Defined Fields)	UDFs allow you to tailor your Sunflower Assets application to define and capture additional asset information that is unique to your organization.
User (Person)	Represents a person record in Sunflower. In order to be granted access a person record must, exist, however, this person record does not need to be a system user. They can be who an asset is assigned to or represent contacts of an organization.



# INTRO TO ORACLE E-BUSINESS SUITE

## KEY TERMS



The Application Toolbar is a collection of iconic buttons and a list of shortcuts that replication commonly used menu items.

Key Terms and Concepts	Definition
<b>Accounting Code Structure (ACS)</b>	Naming convention that supports the traceability of financial information for budgeting, financial accounting, and reporting. Triggered by financial transactions, it appears as a string of numbers varying in length depending on the type of transaction and is made up of data elements used for categorizing financial transactions that enable retrieval, summarization, and reporting of information in a meaningful way.
<b>Accounting Key Flexfield</b>	A feature of Oracle General Ledger that contains the account coding for accounting distributions throughout BAS. All segments of the Account Code Structure (ACS) are loaded and maintained here (i.e. Budget Fiscal Year, Fund, Organization Code, Program Code, Account, Budget Object Code, Thematic, and Future Use). Additionally, all values for each of the ACS Segments are loaded and maintained here (e.g. value '02000100' is the Organization Code for DOC Academy').
<b>Change Control Board (CCB)</b>	A committee that makes decisions regarding whether or not proposed changes to a software project should be implemented.
<b>Cloud</b>	The practice of using a network of remote servers hosted on the Internet to store, manage, and process data, rather than a local server or personal computer.
<b>Configuration</b>	A set of rules and parameters within an application that provide pre-defined decision points or values that determine key functions such as security and administration.
<b>Customization</b>	Changes made to the base code of a system affecting standard screens, workflows, or functionality. In a COTS environment, customization is undesirable since it makes system upgrades more complex and time consuming.
<b>Descriptive Flexfield</b>	Flexfields which are (authorized-) user-defined and record data elements that aren't provided in the delivered Oracle EBS Financials software



# INTRO TO ORACLE E-BUSINESS SUITE

## KEY TERMS (CONT.)



The Application Toolbar is a collection of iconic buttons and a list of shortcuts that replication commonly used menu items.

Key Terms and Concepts	Definition
<b>Extension</b>	Sometimes referred to as a 'hook' , extensions are used to capture and maintain information from one system to be used by other systems. Extensions can be created in multiple ways, including: interfaces, reports, workflows and modules.
<b>Flexfield</b>	A database field that has flexibility built into it so that authorized users can define reporting structures that are relevant to their specific organizations.
<b>Module</b>	A grouping of software components and features of interrelated business functions defined by the software developer for licensing and maintenance purposes (e.g., Accounts Receivable, Purchasing, etc.)
<b>Oracle EBS Financials</b>	Oracle's E-Business Suite Financials is the core software of the BAS implementation.



# BAS ACRONYMS

## LIST OF BAS ACRONYMS



ACRONYM	Definition	ACRONYM	Definition	ACRONYM	Definition
ACS	Account Code Structure	FRPP	Federal Real Property Profile	RTM	Requirements Traceability Matrix
AP	Accounts Payable	GD	Global Design	SaaS	Software as a Service
API	Application Programming Interface	GL	General Ledger	SAM	System for Award Management
AR	Accounts Receivable	GL	General Ledger	SDLC	System Development Lifecycle
ASAP	Automated Standard Application for Payments	GMIS	Grants Management Information System (GMIS)	SF	Sunflower
BI	Business Intelligence	GOL	Grants Online	SLA	Subledger Accounting
BMON	Batch Monitoring	GSA	General Services Administration	SoF	Status of Funds
BPR	Business Process Re-engineering	GTAS	Governmentwide Treasury Account Symbol	SQL	Standard Query Language
BPR	Business Process Reengineering	HFM	Hyperion Financial Management	TD	Technical Design
CAR	Commerce Acquisition Regulation	HTML	Hypertext Markup Language	TST	Test
CNV	Conversion	IAA	Interagency Agreement	UAT	User Acceptance Test
COTS	Commercial off the Shelf	INT	Interface	WKF	Workflow
CS	Common Solution	IPAC	Intra-Government Payment and Collection		
CTA	Classification Transactions and Accountability	KDD	Key Design Decisions		
CVR	Cross Validation Rules	O&M	Operations and Maintenance		
CWT	Carlson Wagonlit Travel	OBIEE	Oracle Business Intelligence Enterprise Edition		
DB	Database	OCM	Organizational Change Management		
DBA	Database Administrator	OOTB	Out of the Box		
DEV	Development	PA	Project Accounting		
DNP	Do Not Pay	PAM	Payment Automation Manager		
DOC	Department of Commerce	PB	Project Billing		
EBS	Enterprise Business Suite	PC	Project Costing		
EDW	Enterprise Data Warehouse	PMO	Project Management Office		
ERP	Enterprise Resource Planning	PP	Personal Property		
ETL	Extract Transform Load	RBAC	Role Based Access Control		
EXT	Extension	RICEW	Reports – Interface – Conversion – Extension – Workflow		
FAR	Federal Acquisition Regulations	RP	Real Property		
FD	Functional Design	RPA	Robotic Process Automation		
FPDS-NG	Federal Procurement Data System Next Generation				